

The following resources related to this article are available online at www.sciencemag.org (this information is current as of November 25, 2009):

Updated information and services, including high-resolution figures, can be found in the online version of this article at:

<http://www.sciencemag.org/cgi/content/full/311/5760/470a>

A list of selected additional articles on the Science Web sites **related to this article** can be found at:

<http://www.sciencemag.org/cgi/content/full/311/5760/470a#related-content>

This article **cites 4 articles**, 1 of which can be accessed for free:

<http://www.sciencemag.org/cgi/content/full/311/5760/470a#otherarticles>

This article appears in the following **subject collections**:

Technical Comments

http://www.sciencemag.org/cgi/collection/tech_comment

Information about obtaining **reprints** of this article or about obtaining **permission to reproduce this article** in whole or in part can be found at:

<http://www.sciencemag.org/about/permissions.dtl>

Comment on "Reconstructing the Origin of Andaman Islanders"

Malliya gounder Palanichamy,^{1,2} Suraksha Agrawal,³ Yong-Gang Yao,² Qing-Peng Kong,² Chang Sun,² Faisal Khan,³ Tapas Kumar Chaudhuri,⁴ Ya-Ping Zhang^{1,2*}

On the basis of mitochondrial DNA sequence analyses, Thangaraj *et al.* (Brevia, 13 May 2005, p. 996) proposed that Andaman islanders descended from the first humans to migrate out of Africa. We identified mitochondrial DNA from two northeast Indian Rajbanshi individuals that shares three specific mutations with the M31a lineage observed in the Great Andamanese, which suggests that the predecessor of haplogroup M31 originated on the Indian subcontinent.

The origin of Andaman islanders has been the subject of recent debate (1, 2). On the basis of analyses of complete mitochondrial DNA (mtDNA) sequences, Thangaraj *et al.* (3) concluded that two Andaman populations, the Onge and the Great Andamanese, are the direct descendants of the first emigrants from the out-of-Africa migration ~50,000 to 70,000 years ago. This inference, however, is largely based on the observation of two specific mitochondrial lineages in these populations, referred to as M31 and M32. Our genome screening for both control and partial coding regions in 1200 Indian individuals (4–6) identified two Rajbanshi individuals from West Bengal who belong to the same haplotype and show genetic similarity with the hitherto Andaman islanders–

specific haplogroup M31. They share three coding-region mutations at nucleotide positions 4907, 11176, and 15530 (Fig. 1). The complete sequencing data illustrate that the Rajbanshi mtDNA differs markedly from the Andaman islanders–specific haplogroup M31 (here renamed M31a to distinguish the Rajbanshi branch, which we name M31b) by 11 specific coding-region mutations. This provides new phylogeographic evidence for an early divergence of these lineages on the Indian subcontinent and reduces the estimated time of isolation of the Andamanese (3).

It is therefore most plausible that the predecessor of haplogroup M31 (defined by the motif 4907-11176-15530) originated on the Indian subcontinent rather than in East Africa or East Asia and that the subsequent isolation of the Great Andamanese eventually gave rise to the M31a haplogroup. More population data from India are necessary to confirm this theory. Mapping out the distribution of the newly identified and rare M31b branch among the heavily structured populations of South Asia, as well as identifying relatives of the M32 lineage, will provide further insight into the origin of Andaman islanders.

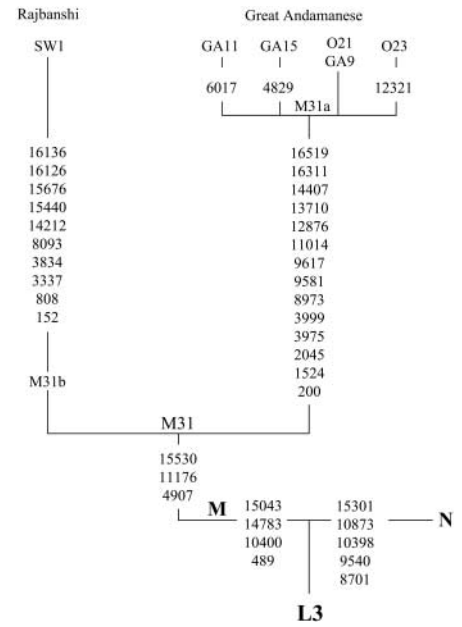


Fig. 1. Phylogenetic tree reconstructed on the basis of complete M31 mtDNA sequences from the Great Andamanese and Rajbanshi.

References and Notes

1. K. Thangaraj *et al.*, *Curr. Biol.* **13**, 86 (2003).
2. P. Endicott *et al.*, *Am. J. Hum. Genet.* **72**, 178 (2003).
3. K. Thangaraj *et al.*, *Science* **308**, 996 (2005).
4. M. G. Palanichamy *et al.*, *Am. J. Hum. Genet.* **75**, 966 (2004).
5. M. G. Palanichamy *et al.*, unpublished data.
6. The 1200 analyzed mtDNA sequences include 521 south Indians (Reddy and Thogataveera from Andhra Pradesh and a mixed group from Tamil Nadu), 568 north Indians (Bhargava, Chaturvedi, and mixed Brahmin from Uttar Pradesh), and 111 northeast Indians (Rajbanshi from West Bengal and Khasi from Meghalaya).
7. We thank two anonymous referees for their valuable comments. This work was supported by the Natural Science Foundation of Yunnan Province (2005C00012) and the National Natural Science Foundation of China (30021004).

14 September 2005; accepted 21 November 2005
10.1126/science.1120176

¹Laboratory for Conservation and Utilization of Bio-resource, Yunnan University, Kunming 650091, China. ²Laboratory of Cellular and Molecular Evolution, and Molecular Biology of Domestic Animals, Kunming Institute of Zoology, Chinese Academy of Sciences, Kunming 650223, China. ³Department of Medical Genetics, Sanjay Gandhi Institute of Medical Sciences, 226014 Lucknow, India. ⁴Department of Zoology, North Bengal University, Siliguri, West Bengal, India.

*To whom correspondence should be addressed. E-mail: zhangyp1@263.net.cn